

## PubMed

U.S. National Library of Medicine  
National Institutes of Health



Display Settings: Abstract

BMC Cancer. 2011 Jan 19;11:23.

### Intracranial metastasis from primary transitional cell carcinoma of female urethra: case report & review of the literature.

Moon KS, Jung S, Lee KH, Hwang EC, Kim IY.

Department of Neurosurgery, Chonnam National University Research Institute of Medical Sciences, Chonnam National University Hwasun Hospital & Medical School, 160 Ilim-ri, Hwasun-eup, Hwasun-gun, Jeollanam-do, 519-809, South Korea.

#### Abstract

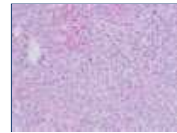
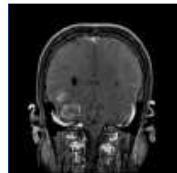
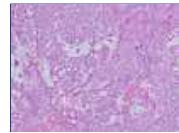
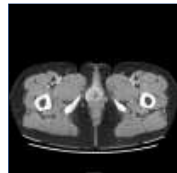
**BACKGROUND:** Transitional cell carcinoma (TCC) of the female urethra is a rare urological malignancy, and intracranial metastasis of this cancer has not yet been reported in the literature. This review is intended to present a case of multiple intracranial metastasis in a female patient with a remote history of primary urethral TCC.

**CASE PRESENTATION:** A 49-year-old woman, presented with a prolapsed mass in urethral orifice that was diagnosed as primary urethral TCC with distant lung and multiple bone metastases. The patient subsequently underwent chemotherapy under various regimens. A year later, the patient developed headache and vomiting which as was found to be due to multiple intracranial metastasis. The patient underwent surgical resection of the largest lesion located on the cerebellum, and consecutively gamma knife radiosurgery was performed for other small-sized lesions. Pathological examination of the resected mass revealed a metastatic carcinoma from a known urethral TCC. Serial work-up of systemic metastasis revealed concomitant aggravation of lung, spleen, and liver metastasis. The patient died of lung complication 2 months after the diagnosis of brain metastasis.

**CONCLUSION:** To the best of our knowledge, this is the first reported case of cerebral metastasis from primary urethral TCC, with pathological confirmation. As shown in intracranial metastasis of other urinary tract carcinoma, this case occurred in the setting of uncontrolled systemic disease and led to dismal prognosis in spite of aggressive interventional modalities.

PMID: 21244713 [PubMed - indexed for MEDLINE] PMCID: PMC3033851 [Free PMC Article](#)

[Images from this publication.](#) [See all images \(4\)](#) [Free text](#)



[Publication Types, MeSH Terms](#)

[LinkOut - more resources](#)