

PubMed

U.S. National Library of Medicine
National Institutes of Health



Display Settings: Abstract

[Surg Neurol Int.](#) 2011 Feb 26;2:25.

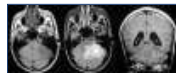
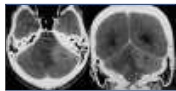
Extra axial adult cerebellopontine angle medulloblastoma: An extremely rare site of tumor with metastasis.

Singh M, Cugati G, Symss NP, Pande A, Vasudevan MC, Ramamurthi R.

Department of Neurosurgery, Voluntary Health Services, Adyar, Chennai-600 113, India.

PMID: 21427791 [PubMed - in process] PMCID: PMC3050070 [Free PMC Article](#)

Images from this publication. [See all images \(4\)](#) [Free text](#)



[LinkOut - more resources](#)