

---

## CORRECTIONS

---

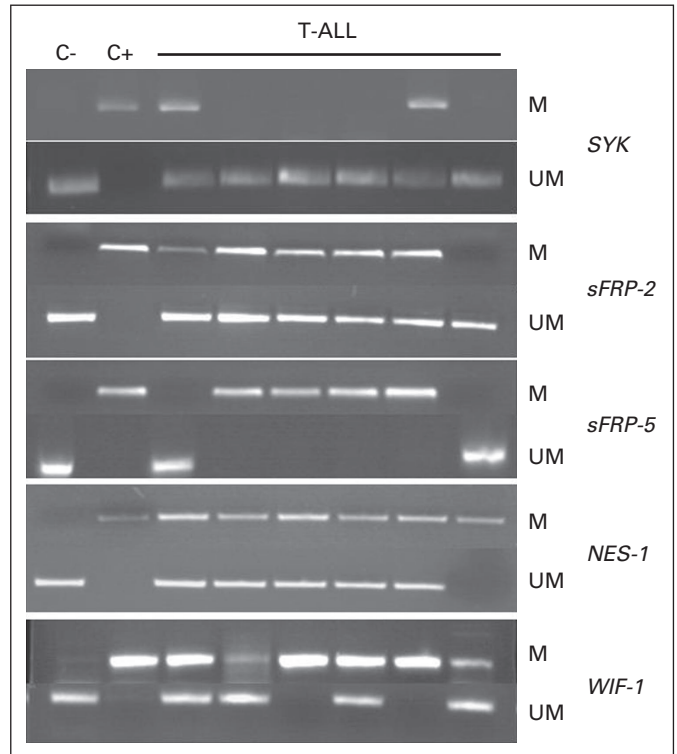
### Author Correction

The October 1, 2005, article by Roman-Gomez et al, entitled, "Lack of CpG Island Methylator Phenotype Defines a Clinical Subtype of T-Cell Acute Lymphoblastic Leukemia Associated With Good Prognosis" (J Clin Oncol 23:7043-7049, 2005), contained an error.

An erroneous image was given as Figure 1. The corrected figure is reprinted here in its entirety.

The authors apologize to the readers for the mistake.

DOI: 10.1200/JCO.2010.32.2347



**Fig 1.** Aberrant promoter methylation of different genes in T-cell acute lymphoblastic leukemia (T-ALL) samples. C-, peripheral blood lymphocytes from healthy donors; C+, human male genomic DNA universally methylated for all genes (used as a positive control for methylated alleles); M, methylated alleles; UM, unmethylated alleles.

---

### Journal Correction

The June 20, 2010, article by Fogh et al, entitled, "Hypofractionated Stereotactic Radiation Therapy: An Effective Therapy for Recurrent High-Grade Gliomas" (J Clin Oncol 28:3048-3053, 2010), contained an error.

In the affiliations section, the Kimmel Cancer Center at Thomas Jefferson University should have been listed instead of the Sidney Kimmel Comprehensive Cancer Center at Johns Hopkins University, as follows:

From the Department of Radiation Oncology, Neurological Surgery, Kimmel Cancer Center, and the Division of Biostatistics, Department of Pharmacology and Experimental Therapeutics, Jefferson Medical College, Thomas Jefferson University, Philadelphia, PA.

*Journal of Clinical Oncology* apologizes to the authors and readers for the mistake.

DOI: 10.1200/JCO.2010.32.2362