

# BMJ Open APPROACH: Analysis of Proton versus Photon Radiotherapy in Oligodendroglioma and Assessment of Cognitive Health – study protocol paper for a phase III multicentre, open-label randomised controlled trial

Finbar Slevin,<sup>1,2</sup> Eleanor Mae Hudson ,<sup>3</sup> Florian W Boele,<sup>1,4</sup> James R Powell,<sup>5</sup> Samantha Nutch,<sup>3</sup> Myfanwy Borland,<sup>6</sup> Sarah Brown ,<sup>3</sup> Anna Bruce,<sup>6</sup> Helen Bulbeck,<sup>7</sup> Neil G Burnet,<sup>8</sup> Yen Ching Chang,<sup>9</sup> Rovel Colaco,<sup>8</sup> Stuart Currie,<sup>10</sup> Daniel Egleston,<sup>6</sup> Naomi Fersht,<sup>9</sup> Martin Klein,<sup>11</sup> John Lilley,<sup>2</sup> Matthew Lowe,<sup>8</sup> Elizabeth Miles,<sup>12</sup> Robert D Murray,<sup>13</sup> Daniel J O'Hara,<sup>14,15</sup> Matthew Norris,<sup>3</sup> Catherine Parbutt,<sup>16</sup> Alexandra Smith,<sup>3</sup> Charlotte Smith,<sup>8</sup> Gillian A Whitfield,<sup>8,17</sup> Susan Short,<sup>1,2</sup> Louise Murray<sup>1,2</sup>

**To cite:** Slevin F, Hudson EM, Boele FW, *et al.* APPROACH: Analysis of Proton versus Photon Radiotherapy in Oligodendroglioma and Assessment of Cognitive Health – study protocol paper for a phase III multicentre, open-label randomised controlled trial. *BMJ Open* 2025;**15**:e097810. doi:10.1136/bmjopen-2024-097810

► Prepublication history and additional supplemental material for this paper are available online. To view these files, please visit the journal online (<https://doi.org/10.1136/bmjopen-2024-097810>).

Received 10 December 2024  
Accepted 28 January 2025



© Author(s) (or their employer(s)) 2025. Re-use permitted under CC BY. Published by BMJ Group.

For numbered affiliations see end of article.

## Correspondence to

Dr Finbar Slevin;  
f.m.slevin@leeds.ac.uk

## ABSTRACT

**Introduction** Oligodendroglioma (ODG) is a rare type of brain tumour, typically diagnosed in younger adults and associated with prolonged survival following treatment. The current standard of care is maximal safe debulking surgery, radiotherapy (RT) and adjuvant procarbazine, lomustine and vincristine (PCV) chemotherapy. Patients may experience long-term treatment-related toxicities, with RT linked to impairments of neurocognitive function (NCF) and health-related quality of life (HRQoL). With proton beam therapy (PBT), radiation dose falls off sharply beyond the target with reduced normal brain tissue radiation doses compared with photon RT. Therefore, PBT might result in reduced radiation-induced toxicity compared with photon RT.

**Methods and analysis** APPROACH is a multicentre open-label phase III randomised controlled trial of PBT versus photon RT in patients with ODG, investigating the impact of PBT on long-term NCF measured using the European Organisation for Research and Treatment of Cancer (EORTC) Core Clinical Trial Battery Composite (CTB COMP). The trial will randomise 246 participants from 18 to 25 UK RT sites, allocated 1:1 to receive PBT or photon RT, with PBT delivered at one of the two UK PBT centres. Participants with grade 2 and grade 3 ODG will receive 54 Gy in 30 fractions and 59.4 Gy in 33 fractions, respectively, followed by 6×6-weekly cycles of PCV chemotherapy. The trial contains staged analyses, with an internal pilot for feasibility of recruitment at 12 months, early assessment of efficacy at 2 years, futility assessment and final primary endpoint comparison of NCF between arms at 5 years. Secondary endpoints include additional NCF, treatment compliance, acute and late toxicities, endocrinopathies, HRQoL, tumour response, progression-free survival and overall survival.

## STRENGTHS AND LIMITATIONS OF THIS STUDY

- ⇒ UK multicentre phase III randomised controlled trial of proton beam therapy versus photon radiotherapy for oligodendroglioma.
- ⇒ Multistaged analyses will provide continuous assurance of trial processes to ensure successful trial delivery, including preplanned interim analysis to enable early assessment of benefit from proton beam therapy versus photon radiotherapy.
- ⇒ Trial endpoints and trial design informed by patient and public involvement, with strong emphasis on participant-centred outcome measures.
- ⇒ Embedded mechanistic component to explore relationships between spatial location of radiation dose to brain substructures and development of neurocognitive toxicities.

**Ethics and dissemination** Ethical approval was obtained from Newcastle North Tyneside REC (reference 22/NE/0232). Final trial results will be published in peer-reviewed journals and adhere to International Committee of Medical Journal Editors (ICMJE) guidelines.

**Trial registration number** ISRCTN:13390479.

## INTRODUCTION

Oligodendroglioma (ODG) is rare, accounting for around 3% of new brain tumour diagnoses with approximately 350 patients diagnosed each year in the UK.<sup>1</sup> The diagnosis of ODG is determined by the presence of 1p19q chromosomal codeletion and isocitrate dehydrogenase (IDH) mutation,<sup>2</sup>

with histological classification as either WHO grade 2 or 3. ODG typically has a good prognosis, with median survival in excess of 10 years, and median age at diagnosis is approximately 45 years.<sup>3-6</sup> The majority of tumours are located in higher functioning regions of the brain in the frontal or temporal lobes. The current standard of care is maximal safe debulking surgery, radiotherapy (RT) and adjuvant procarbazine, lomustine and vincristine (PCV) chemotherapy.<sup>3,7,8</sup>

Photon RT is typically used to treat ODG, but it may be associated with irreversible long-term toxicities including impairment of neurocognitive function (NCF).<sup>9-11</sup> A recent Cochrane systematic review of long-term neurocognitive changes after photon RT for gliomas concluded that the magnitude of impact on NCF following RT remained uncertain, given the paucity of data and risk of bias inherent in the published literature.<sup>11</sup> Nevertheless, treatment-related toxicities have the potential to impact on all aspects of life, including daily functioning, work, education, relationships and caring responsibilities, especially given the relatively young age and prolonged survival of many patients with ODG.<sup>12</sup> In addition, even small deficits in NCF may negatively impact health-related quality of life (HRQoL) and affect activities of daily living.<sup>13</sup>

It is hypothesised that proton beam therapy (PBT) may result in fewer long-term toxicities compared with photon RT due to relative sparing of surrounding normal brain structures, which could result in less neurocognitive decline. In silico studies in patients with low-grade

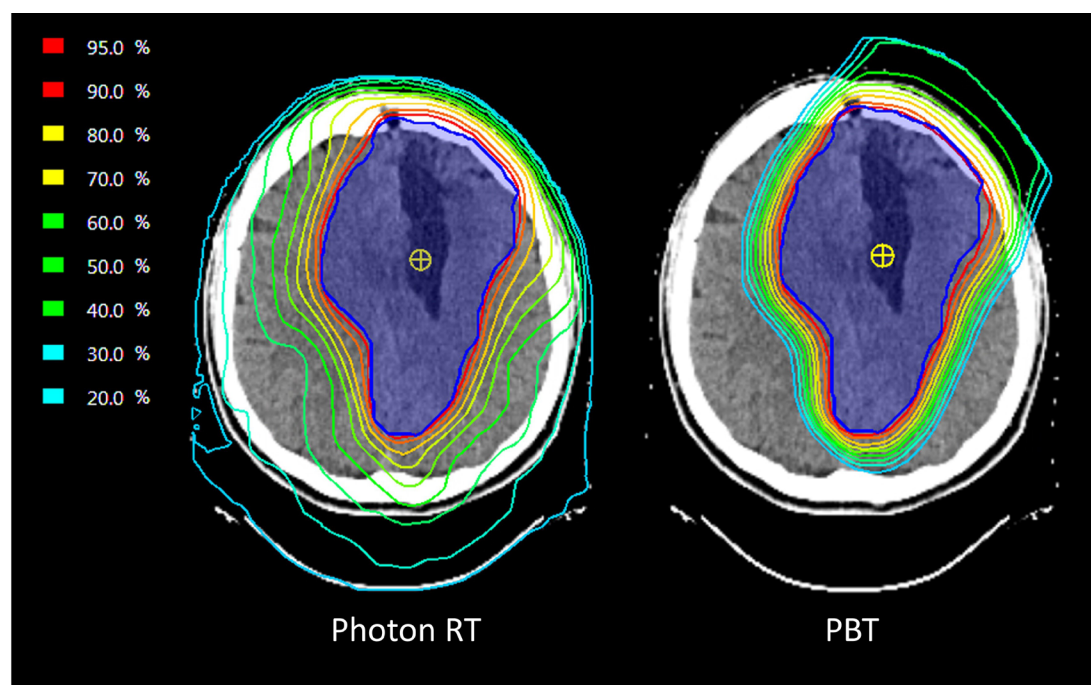
gliomas have demonstrated dosimetric advantages of PBT (see [figure 1](#)), but there remains an absence of high-level evidence that demonstrates clinical improvements in long-term toxicity using this approach.<sup>14</sup> The outcomes of small, single-arm prospective cohort studies with relatively short follow-up in low-grade glioma suggest that stability in NCF and HRQoL may be achieved after PBT.<sup>15-17</sup> However, there is an urgent need for randomised controlled trials (RCTs) to definitively characterise the clinical benefits of PBT compared with photon RT.

A recent systematic review highlighted the limited current evidence base for PBT, with a need for prospective randomised trials to evaluate its benefits in terms of long-term toxicities and patient-reported outcomes.<sup>18</sup> PBT is now available in two UK National Health Service (NHS) centres (The Christie NHS Foundation Trust and University College London NHS Foundation Trust), which provides an opportunity to develop a practice-changing evidence base for PBT.

## METHODS AND ANALYSIS

### Study design

**APPROACH:** Analysis of Proton versus Photon Radiotherapy in Oligodendroglioma and Assessment of Cognitive Health is a multicentre open-label parallel group phase III RCT of PBT versus photon RT in patients with ODG. The aim of the study is to determine whether participants treated with PBT demonstrate better NCF compared with



**Figure 1** Photon RT and PBT radiotherapy dose distributions in a patient treated for ODG. Planning CT axial images of the brain showing radiation dose distributions for corresponding photon RT and PBT plans. In each plan, the dark blue contour represents the Planning Target Volume (PTV). The isodose lines represent the radiation dose to be delivered as a percentage of the prescription dose, as indicated in the key; warmer colours/higher percentages represent regions of higher dose. Greater dose sparing of normal brain structures outside of the PTV is apparent in the PBT plan. It is currently uncertain if this translates into a clinical improvement in neurocognitive function. ODG, oligodendroglioma; PBT, proton beam therapy; RT, radiotherapy.

**Table 1** Inclusion and exclusion criteria

Inclusion criteria	Exclusion criteria
▶ Histologically confirmed grade 2/3 ODG, 1p19q codeletion and IDH mutation	▶ Leptomeningeal, spinal or infratentorial disease
▶ Randomisation within 28 days of MRI which supports decision that RT is required at that point in time—outside of 28 days, an updated MRI is required	▶ Prior cranial or head and neck RT
▶ Aged 25 or over at start of RT	▶ Previous chemotherapy for ODG. The use of vorasidenib or similar IDH inhibitors prior to radiotherapy, should these become available in the UK, will not render the patient ineligible
▶ KPS $\geq$ 70	▶ Comorbid neurological condition(s) influencing NCF
▶ Adequate wound healing/recovery following surgery (if applicable)	▶ Contraindication to MRI or gadolinium
▶ Able to provide study-specific written informed consent	▶ Severe active comorbidity making patient unsuitable for radical RT and/or adjuvant chemotherapy
▶ Able to complete baseline NCF testing in English	▶ Any recognised genetic syndrome causing sensitivity to RT
▶ Adequate haematological, renal and hepatic function for PCV chemotherapy	▶ Contraindication to procarbazine, lomustine or vincristine, including coeliac disease and rare hereditary conditions of galactose intolerance, total lactase deficiency or glucosegalactose malabsorption
▶ Able to swallow oral medication	▶ Prior invasive malignancy, unless disease-free interval $\geq$ 3 years
▶ Participants born female of childbearing potential must agree to be pregnancy screened prior to entering the trial, provide a negative pregnancy result within 7 days prior to randomisation and agree to use medically acceptable methods of contraception during RT, between the end of RT and start of adjuvant chemotherapy, during chemotherapy and for 6 months following the end of chemotherapy	▶ Pregnancy or breastfeeding
▶ Fertile participants born male must agree to use medically acceptable methods of contraception during RT, between the end of RT and start of adjuvant chemotherapy, during chemotherapy and for 6 months following the end of chemotherapy	▶ Participant unable or unwilling to attend for follow-up
	▶ Recognised genetic syndrome causing sensitivity to radiotherapy

IDH, isocitrate dehydrogenase; KPS, Karnofsky Performance Status; NCF, neurocognitive function; ODG, oligodendroglioma; PCV, procarbazine, lomustine and vincristine chemotherapy; RT, radiotherapy.

those treated with photon RT. A mechanistic component will investigate the relationship between RT dosimetry in specific brain regions and impairments in NCF.

Participants are patients with ODG who require RT, followed by adjuvant PCV chemotherapy, and who meet all eligibility criteria for the study (inclusion and exclusion criteria are listed in [table 1](#)), and their caregivers. Potential participants will be identified at local neuro-oncology multidisciplinary team meetings, approached at outpatient clinics and provided with the study Participant Information Sheet. Patients will be given time to consider participation. Written informed consent will be obtained. Participants will be randomised 1:1 to PBT or photon RT from 18 to 25 UK RT centres, with PBT delivered in one of the two NHS proton centres, depending on geographical

location with consideration for availability and photon RT delivered in the local RT centre. For participants allocated to PBT, the NHS will provide accommodation for preassessment visits and for the duration of PBT for the participant and one partner/caregiver. Following RT, all participants will receive adjuvant PCV chemotherapy at their local site. Follow-up will also be at local sites as per standard of care. Trial-specific participant assessments are summarised in [table 2](#). The trial schema is shown in [figure 2](#).

The main trial analyses will be staged:

- ▶ Stage 1: assessment of feasibility of recruitment (first 12 months)
- ▶ Stage 2: efficacy interim analysis of NCF (all participants at 2 years)

**Table 2** Schedule of assessments

	Baseline/pre-treatment		Treatment		Post-RT follow-up							
	Eligibility/preregistration	Prerandomisation	Pre-RT	Weekly RT	1 month	3 months	6 months	1 year	2 years	3 years	4 years	5 years
Medical history	X											
Clinical assessment	X			X	X	X	X	X	X	X	X	X
Pregnancy test	X	X	X		X	X	X					
Informed consent	X											
MRI scan	X	X	X		X	X	X	X	X	X	X	X
Radiotherapy planning CT scan		X										
PBT or photon RT				X								
PCV chemotherapy								6×6-weekly cycles of adjuvant PCV chemotherapy				
Neurocognitive function tests*		X			X			X	X	X	X	X
CTCAE toxicity assessment		X		X	X	X	X	X	X	X	X	X
Endocrine assessments			X					X	X	X	X	X
HRQoL†		X		X‡	X	X	X	X	X	X	X	X
Work and economic impact§		X		X‡	X	X	X	X	X	X	X	X
Caregiver distress¶		X		X‡	X	X	X	X	X	X	X	X

\*EORTC core CTB COMP and CNS Vital Signs test battery.

†EORTC QLQ-C30 and BN20, EQ-5D-5L, MFI, HADS.

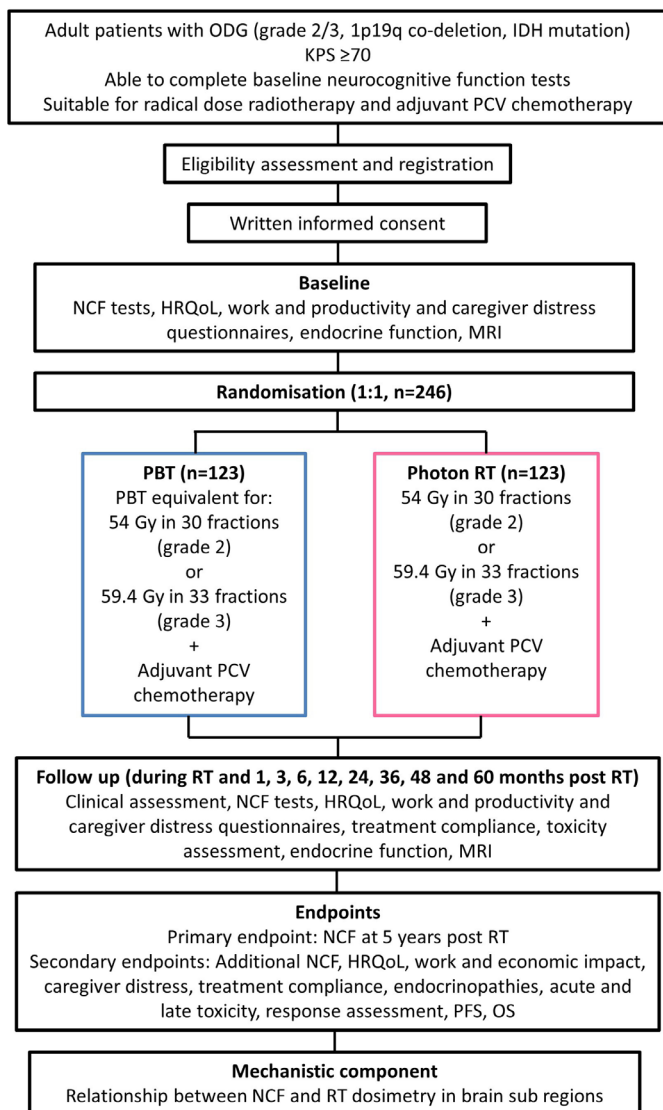
‡Once in the final week of RT.

§WPAI: General Health Questionnaire and health resource use questionnaire.

¶Caregiver needs screen.

CNS, central nervous system; CTCAE, Common Terminology Criteria for Adverse Events; EORTC CTB COMP, European Organisation for Research and Treatment of Cancer Core Clinical Trial Battery Composite; EORTC QLQ-C30 and BN20, European Organisation for Research and Treatment of Cancer Quality of Life Questionnaire and Brain Neoplasm Questionnaire; EQ-5D-5L, EuroQol-5 Dimension-5 Response-Level Questionnaire; HADS, Hospital and Anxiety Depression Scale; HRQoL, health-related quality of life; MFI, Multidimensional Fatigue Assessment; PBT, proton beam therapy; PCV, procarbazine, lomustine and vincristine; RT, radiotherapy; WPAI, Work Productivity and Activity Impairment.





**Figure 2** Trial schema. HRQoL, health-related quality of life; IDH, isocitrate dehydrogenase; KPS, Karnofsky Performance Status; NCF, neurocognitive function; ODG, oligodendroglioma; OS, overall survival; PBT, proton beam therapy; PCV, procarbazine, lomustine and vincristine; PFS, progression-free survival; RT, radiotherapy.

- ▶ Stage 3: fertility interim analysis of NCF (50% of participants at 5 years)
- ▶ Stage 4: final analysis of NCF and secondary endpoints (all participants at 5 years)

The original planned start and end dates for the trial are 1 February 2021 to 17 July 2031. Recruitment commenced on 17 January 2024.

See ‘Statistical considerations’ section for further detail.

### Radiotherapy

The *APPROACH RT guidelines* provide full details on immobilisation, planning image acquisition, target volume and organ at risk contouring, treatment planning, treatment delivery and quality assurance.

RT will ideally start within 6 weeks of randomisation (and must start within 10 weeks). A dedicated MRI scan

to assist in RT planning is mandated. The immediate postoperative MRI must not be used for this purpose, as post-operative changes may not have had sufficient time to resolve.

Total RT dose will be 54 Gy (RBE, relative biological effectiveness) in 30 daily 1.8 Gy fractions over approximately 6 weeks for grade 2 ODG and 59.4 Gy (RBE) in 33 daily 1.8 Gy fractions over approximately 6.5 weeks for grade 3 ODG. RBE-weighted dose in units of Gray (Gy (RBE)) will be used to describe the product of the absorbed dose and the RBE. The RBE will be interpreted as 1.1 for PBT and 1.0 for photon RT.

RT will be delivered as an outpatient on weekdays. Photon RT will be delivered using intensity-modulated RT or volumetric-modulated arc therapy. PBT will be delivered using pencil beam scanning, typically performed with single-field optimisation. Each participant treated using PBT will have an equivalent photon RT plan produced for use in the event of PBT machine problems.

For photon RT, local practice for treatment verification will be followed. For PBT, daily online image-guided verification with positional correction using 2D kV imaging or cone beam CT will be performed.

### Chemotherapy

Adjuvant PCV chemotherapy is per standard of care, which in the UK is usually according to the BR12 trial schedule.<sup>19</sup> Chemotherapy should start within 4–8 weeks of completion of RT. Initial doses (in the absence of renal or hepatic impairment) will be as follows:

- ▶ Procarbazine 100 mg/m<sup>2</sup>, with dose banding/capping as per the institution’s usual practice one time per day on days 1–10 or days 2–11, orally, on a 42 day cycle, for up to six cycles.
- ▶ Lomustine 100 mg/m<sup>2</sup>, with dose banding/capping as per the institution’s usual practice day 1, orally, on a 42 day cycle, for up to six cycles.
- ▶ Vincristine 1.4–1.5 mg/m<sup>2</sup> (or flat dose of 2 mg if this is usual institutional practice), with dose banding/capping as per the institution’s usual practice, intravenously, day 1, on a 42 day cycle for up to six cycles.

Suggested dose modifications and reductions are provided in the APPROACH trial protocol regarding PCV in the presence of haematological, pulmonary or neurological toxicity or renal or hepatic dysfunction.

### Endpoints

#### Primary endpoint

The primary outcome is NCF assessed at baseline and at 1, 12, 24, 36, 48 and 60 months post-RT. NCF will be measured by the paper-based European Organisation for Research and Treatment of Cancer (EORTC) Core Clinical Trial Battery Composite (CTB COMP).<sup>20 21</sup> CTB COMP evaluates processing speed, verbal memory and executive functioning.

The CTB COMP consists of the following tests, yielding six measures:

**Table 3** Secondary endpoints

Endpoint	Definition/measurement
▶ Additional NCF tests	Computer-based CNS Vital Signs platform, which evaluates attention, psychomotor speed, verbal/visual memory and aspects of executive functioning <sup>44</sup>
▶ Caregiver distress	Caregiver needs screen
▶ Work and economic impact (participants and carers)	WPAI: General Health Questionnaire, and Health Resource Use Questionnaire
▶ Treatment compliance	Total dose of RT delivered; overall treatment time; details of any interruptions to RT and reasons; delivery of any fractions using photon RT instead of PBT; number of chemotherapy cycles; chemotherapy doses delivered; details of any modifications and reasons
▶ Endocrinopathies	Static/dynamic testing of the following on blood samples: <ul style="list-style-type: none"> <li>▶ GH/IGF-1</li> <li>▶ FSH/LH</li> <li>▶ Testosterone and SHBG (male participants)</li> <li>▶ Oestradiol (female participants)</li> <li>▶ Cortisol</li> <li>▶ Free T3/T4, TSH</li> <li>▶ Prolactin</li> </ul>
▶ Safety and toxicity	Acute ( $\leq 3$ months post-RT) and late ( $> 3$ months post-RT) toxicities measured using CTCAE V.5.0.
▶ HRQoL	EORTC QLQ-C30 and BN20, EQ-5D-5L, MFI and HADS.
▶ Tumour response assessment	MRI brain performed with the following sequences: • T2 • FLAIR • DWI • T1 pregadolinium <ul style="list-style-type: none"> <li>▶ T1 postgadolinium Evaluation based on RANO criteria.</li> </ul>
▶ PFS	Time from randomisation to the date of the first-documented evidence of progression or death from any cause.
▶ OS	Time from randomisation to the date of death from any cause.

CNS, central nervous system; CTCAE, Common Terminology Criteria for Adverse Events; DWI, diffusion-weighted imaging; EORTC QLQ-C30 and BN20, European Organisation for Research and Treatment of Cancer Quality of Life Questionnaire and Brain Neoplasm Questionnaire; EQ-5D-5L, EuroQol-5 Dimension-5 Response-Level Questionnaire; FLAIR, fluid-attenuated inversion recovery; FSH, follicle stimulating hormone; GH, growth hormone; HADS, Hospital Anxiety and Depression Scale; HRQoL, health-related quality of life; IGF-1, insulin like growth factor 1; LH, leutinising hormone; MFI, Multidimensional Fatigue Assessment; NCF, neurocognitive function; OS, overall survival; PBT, proton beam therapy; PFS, progression-free survival; RANO, response assessment in neuro-oncology; RT, radiotherapy; SHBG, sex hormone binding globulin; TSH, thyroid stimulating hormone; WPAI, Work Productivity and Activity Impairment.

- ▶ Hopkins Verbal Learning Test-Revised (HVLTR) consists of three parts: free recall, delayed recall and delayed recognition. It measures various aspects of verbal learning and memory, namely storage of verbal information as well as active and passive retrieval of this information.
- ▶ Trail Making Test (TMT part A and TMT part B). Part A indexes visual-motor scanning speed, while part B assesses executive functioning.
- ▶ Controlled Oral Word Association test (COWA) measures expressive language.

The primary endpoint will be the difference in NCF scores, measured by CTB COMP, between the PBT and photon RT arms at 5 years post-RT.

### Secondary endpoints

Secondary endpoints are shown in [table 3](#).

### Statistical considerations

#### Sample size

The primary endpoint of NCF at 5 years will be measured by calculating the mean of standardised z-scores from the HVLTR, TMT-A/B and COWA components of CTB COMP. A Cohen's *d* of 0.5 is regarded as a moderate effect size, which is considered to be clinically relevant given that even small deteriorations in NCF are

likely to be impactful in this patient population.<sup>22</sup> This CTB COMP score is also being used as the primary endpoint measure in the ongoing US NRG-BN005 trial of PBT versus photon RT for cognitive preservation in IDH mutant grade 2/3 glioma (Clinicaltrials.gov NCT03180502). Based on a two-sample t-test with 5% two-sided significance and 90% power, 172 participants (86 per arm) are required to detect an effect size of 0.5. Assuming 30% loss to follow-up at 5 years, 123 participants will be required per arm. The required sample size is therefore 246 participants, to be recruited over 3.5 years. The study is designed with an intermediate and final primary endpoint, whereby a significant positive treatment effect on either endpoint would warrant change in practice. Following the Food and Drug Administration (FDA) guidance on multiple endpoints in clinical trials, the family-wise error rate of 0.05 will be preserved using the fall-back method,<sup>23</sup> with alpha of 0.01 allocated to the intermediate and 0.04 allocated to the final primary endpoint. Should a significant effect be observed on the intermediate endpoint, the full alpha of 0.05 will be used for the final primary endpoint analysis. Irrespective of the early interim assessment outcome, the trial will continue. Assuming the same sample size calculation, using a type I error of 0.04 (5 years) would

provide ~89% power. At the 2 year time point, assuming a smaller dropout rate of 10%, a type I error of 0.01 would provide ~87% power.

### Randomisation

A computer-generated minimisation programme that incorporates a random element will be used to ensure the treatment groups are well balanced for the following factors:

- ▶ Histological tumour grade (2 or 3)
- ▶ Tumour size (<5 cm or ≥5 cm)
- ▶ Extent of most recent surgery (biopsy only, subtotal resection or gross total resection)
- ▶ Randomising site
- ▶ Sex

Randomisation will be performed centrally via University of Leeds Clinical Trials Research Unit (CTRU) automated 24-hour randomisation system. The registration and randomisation process will be instigated by onsite research staff; participant consent form must be attained prior to registration (see online supplemental material).

### Statistical analyses

The trial will be analysed in stages. A detailed statistical analysis will be written before any analysis is undertaken, including interim and final. Statistical analysis will be conducted by the CTRU.

Stage 1: the feasibility of recruitment (numbers of sites opened and participants recruited) will be assessed after the first 12 months. Prespecified traffic light targets will guide assessment of stage 1.<sup>24</sup> If ≥57 participants are recruited (green), the trial will continue immediately to stage 2. If 37–56 participants (amber) are recruited, barriers to recruitment and remedial action will be explored to inform future trial feasibility. If fewer than 37 participants are recruited (red), a full review of the feasibility of the trial will be undertaken with potential trial closure.

Stage 2: interim analysis of 2 year NCF once all participants have reached ≥2 years follow-up. Stage 2 will analyse early evidence of efficacy, defined by a clinically relevant difference in NCF (Cohen's d effect size of ≥0.5) between participants treated with PBT and photon RT, using a 1% significance level to account for multiple testing.<sup>25</sup> The trial will continue to stage 3, regardless of stage 2 results.

Stage 3: further interim analysis of NCF once 50% of participants have reached 5 years follow-up to assess futility. Conditional power will be used to evaluate the probability of achieving a statistically significant result for the final analysis of the primary endpoint, based on accumulated data. A predefined non-binding stopping boundary will be determined in collaboration with the Data Monitoring and Ethics Committee (DMEC) prior to the analysis.<sup>26</sup>

Stage 4: final analysis of primary endpoint of NCF at 5 years and all secondary endpoints.

### Primary endpoint

The primary endpoint will be assessed on an intention to treat population, including all randomised participants, in the treatment arm they were randomised to. Summary statistics will be presented for NCF scores at each timepoint (baseline and at 1, 12, 24, 36, 48 and 60 months post-RT). A mixed-effects repeated measures model will be used to evaluate differences in mean NCF scores between the two treatment arms. The model will adjust for minimisation factors, baseline NCF score, timepoint, treatment group and treatment group by timepoint interaction as fixed effects. Participant and participant time interaction will be fitted as random effects, as appropriate. The final estimated treatment effect will be reported with 95% CIs and associated significance level. Additional 96% (4% level) CIs will be reported if there is no significant effect at the interim analysis (stage 2). The effect size, accounting for SD, will also be estimated in line with the sample size assumptions.

### Secondary endpoints

Summary statistics by treatment arm at each timepoint will be presented for additional tests of NCF, HRQoL, caregiver distress, work and economic impact, treatment compliance, endocrinopathy and response assessment. Similar mixed-effects repeated measures models to those used for the primary endpoint will be used to compare HRQoL and additional NCF tests between treatment arms, adjusted for minimisation factors, relevant clinical characteristics and baseline HRQoL.

The numbers and proportions of participants experiencing each Common Terminology Criteria for Adverse Events (CTCAE) V.5.0 acute and late toxicity grade will be summarised.<sup>27</sup> Safety data will be summarised using the safety population, with participants summarised according to the treatment they received. The proportion of participants experiencing serious adverse reactions and related unexpected serious adverse events will also be summarised.

Overall survival and progression-free survival will be analysed using Cox proportional hazards models. Kaplan-Meier and time to event estimates with 95% CIs will be presented.

### MECHANISTIC COMPONENT

It is hypothesised that there are definable RT dose–response relationships for specific structures/regions within the brain that are associated with impairments in NCF.<sup>28</sup> Neurocognition is complex, and it relies on extensive, interconnecting networks of structures. The dose–response relationships for many of these regions and networks remain undefined.<sup>28 29</sup> The APPROACH trial is an important opportunity to compare RT dosimetry with prospectively collected NCF data. Two approaches will be used as part of this work.

In the first approach, segmentation of the following structures will be performed on coregistered planning

CT and MRI scans, based on existing atlases:<sup>23 30–33</sup> hippocampi (regions of neurogenesis and role in memory), temporal lobes (language, hearing and memory), cerebellum (attention, motor functioning), corpus callosum (processing speed), subventricular zones (neurogenesis), frontal white matter, anterior cingulate gyrus and frontal pole (executive functioning, memory, personality/behaviour and attention), precentral gyrus (primary motor cortex), occipital lobes (vision) and parietal lobes (sensation, spatial awareness). Dosimetric data will be exported from RT plans and corrected for fractionation to the equivalent dose in 2 Gy fractions (EQD2). These data will be compared with NCF data to identify relevant dose impairment thresholds for brain structures using methods similar to those used by Gondi *et al*, with consideration given to multiple hypothesis testing.<sup>34</sup>

In the second approach, lesion symptom mapping will be performed. This is a method for relating a specific region within the brain to a particular function and has been used in the setting of stroke and trauma.<sup>35</sup> Similar to the method used by Habets *et al*, RT doses will be segmented on planning CT/MRI scans in dose bands in EQD2 and resection cavities/tumour will be segmented and subtracted to produce a map of normal tissue doses.<sup>36</sup> Individual normal tissue dose location maps (DLM) will be registered to a standard 3D brain template and grouped together to create probability maps for the presence of dose in each voxel. For each neurocognitive domain and each dose band, we will compare DLMs at voxel level between participants with and without neurocognitive impairment at 5 years, with consideration of multiple hypothesis testing.

The mechanistic component may identify particularly sensitive brain subregions and/or interconnecting neural networks, the dose to which could be constrained during RT planning. It could also highlight scenarios where the normal tissue sparing properties of PBT would be particularly helpful. Where normal tissue doses to particular brain regions cannot be minimised, for example due to tumour location, improved understanding of relationships between RT dosimetry and impairment of NCF may permit more informed discussions regarding potential benefits and risks of treatment. It could also inform strategies to provide targeted neurorehabilitation of specific RT-related neurocognitive toxicities.

## TRIAL ORGANISATION

Trial coordination, data management and statistical aspects of APPROACH will be managed and conducted by the CTRU. Trial organisation will be in line with CTRU standard operating procedures and aligned with principles of Good Clinical Practice.

### Data collection and management

Data collection for APPROACH will be largely remote data entry, with some elements recorded on paper including serious safety events, NCF, and, optionally,

participant-reported outcome measures (PROMs) questionnaires. These will be sent to and entered by the CTRU. PROMs can also be completed online using REDCap. Participant data will be recorded on trial-specific databases. Each database includes automatic validations and checking procedures. Where possible, data will be collected from withdrawn participants who do not withdraw consent from further data collection.

Data collected during the trial will be kept confidential during and after the trial and stored securely at the CTRU. Only the trial team and key members of CTRU staff will have access to the full trial data. At the end of the trial, data will be archived in line with the sponsor's procedures for a minimum of 15 years. After the final trial results publication, researchers may request access to data from the Trial Management Group (TMG) and CTRU.

## Quality assurance

### Radiotherapy quality assurance

RT quality assurance will be conducted by the UK National RT Trials Quality Assurance (RTTQA) Group, to include pretrial and on-trial case review. Benchmarking cases will be completed by all participating sites, with prospective review of the first case and retrospective review of subsequent cases. RT dosimetry and treatment data will be collected for all participants.

### Site initiation and training

All essential documentation and electronic site initiation processes must be complete before a site can open to recruitment. Key members of staff at local sites will be responsible for performing NCF tests on participants and therefore must also complete NCF training. Completion of NCF test booklets will also be reviewed at intervals by the trial team, and feedback provided. Refresher training is also required at specific intervals.

### Trial monitoring

APPROACH will be monitored by a multidisciplinary TMG including clinical trial, neuro-oncology and PBT expertise and patient and public involvement (PPI) representation. The independent DMEC will meet at least annually. This committee will review unblinded data and oversee the safety and integrity of the trial. The Trial Steering Committee (TSC) will receive advice from the DMEC on trial safety and continuation recommendations, and also includes PPI representation. DMEC and TSC charters define roles and responsibilities for each committee member.

## PATIENT AND PUBLIC INVOLVEMENT

PPI has been central to the development of APPROACH. A focus group with 15 patients previously treated with RT for ODG and their caregivers was held to inform the design of APPROACH.<sup>37</sup> Discussions focused on aspects of study design and potential impact of travel and temporary relocation for participants randomised to PBT. Importantly,



feedback from focus group attendees resulted in modification of HRQoL assessments in APPROACH, to ensure that greater information would be obtained regarding fatigue and daily well-being, and inclusion of caregivers' perspectives.

### ETHICS AND DISSEMINATION

Ethical approval was obtained from Newcastle North Tyneside REC (reference 22/NE/0232). The trial was registered with ISRCTN (13390479) on 10 March 2023. APPROACH is not a trial of an investigational medicinal product (non-CTIMP). The APPROACH trial currently adheres to protocol V.3 (17 April 2024). All protocol amendments will be submitted to the REC and communicated with local sites and the PBT centres.

Data from staged analyses may be reported with approval of the trial monitoring committees. All trial manuscripts, including final trial results, will be published open access in peer-reviewed journals and adhere to International Committee of Medical Journal Editors (ICMJE) guidelines.

### DISCUSSION

APPROACH will provide prospective, randomised evidence of whether PBT provides benefit compared with photon RT for patients with ODG with regard to RT-related impairments in NCF. It will provide important insights into HRQoL, caregiver distress, effects on work and other activities of daily living and long-term toxicities associated with PBT compared with photon RT for a population of patients who tend to be of younger age, with work and caring responsibilities and typically experience long-term survival. The mechanistic component of the trial will explore relationships between RT dosimetry in specific brain subregions and development of impairments in NCF. This work has potential to identify sensitive brain structures and interconnecting neural networks where dose could be constrained during RT planning with the goal of reducing impairments in NCF.

APPROACH is the result of close collaboration between multidisciplinary teams of clinicians, scientists, methodologists, clinical trialists, statisticians and PPI representatives, who have worked with national research advisory groups including the previously funded National Cancer Research Institute (NCRI) Clinical and Translational Radiotherapy Working Group (CTRAd) PBT Clinical Trial Strategy Group to design, fund and deliver the trial. NCRI CTRAd organised national meetings to develop PBT clinical trials, including APPROACH, as well as the TORPEdO and PARABLE trials in oropharynx and breast cancers, respectively.<sup>38 39</sup> APPROACH is aligned with the eight-point framework developed by CTRAd's PBT Clinical Trial Strategy Group, and it demonstrates the strength of this co-ordinated approach to the development of RT clinical trials in the UK.<sup>40</sup> Alongside trials of PBT for other disease indications currently in progress, APPROACH

will provide high-level evidence of the impact of PBT on long-term RT toxicities in ODG and identify which patients are most likely to benefit compared with photon RT.<sup>38 39 41</sup> In addition, these data may be relevant for other patient cohorts, including meningioma and other good-prognosis non-ODG glioma subtypes. Building the evidence base for PBT is essential, given the significant capital investment funding required in the set-up of PBT centres and increased costs associated with this treatment compared with photon RT.<sup>40</sup>

Two other RCTs comparing PBT with photon RT for glioma with primary endpoints of NCF are currently in progress. NRG-BN005 is a US phase II trial of 120 participants treated using PBT or photon RT followed by adjuvant temozolomide chemotherapy (NCT03180502). The primary endpoint is NCF at 10 years, also measured using CTB COMP, as in APPROACH. GliProPh is a German trial of 80 participants with a primary endpoint of NCF at 3 years (German Clinical Trials Register DRKS00015160). These trials are investigating PBT in patients with IDH mutant grade 2/3 gliomas, an overlapping, but not identical population to that included in APPROACH (including patients with tumours without 1p19q codeletion, who have a poorer prognosis). The findings of these trials will therefore not be directly applicable to patients with ODG, underlying the importance of APPROACH in delivering the evidence for PBT in this specific subgroup of good prognosis glioma. Given the alignment in terms of neurocognitive tests and effect size used for the primary endpoint in each trial, this may present the opportunity to work collaboratively with the US team leading NRG-BN005, in order to develop the evidence base for PBT across molecular pathologies and treatment regimens. Similarities between APPROACH and NRG-BN005 present a potential opportunity to combine data in a future meta-analysis.

While APPROACH will provide NCF data up to 5 years post-RT, previous data suggest prevalence and severity of impairments in NCF may continue to increase beyond 5 years.<sup>42</sup> This highlights the importance of determining whether NCF is better for participants treated with PBT compared with photon RT. Additionally, the PBT centres' Proton Clinical Outcome Units will continue to collect long-term clinical and patient-reported outcome data for patients treated with PBT, which presents an opportunity to gain valuable insights into the impact of PBT for participants in APPROACH beyond the 5 year timepoint.<sup>43</sup>

APPROACH will deliver high-quality evidence of the impact of PBT on NCF and other long-term toxicities in patients with ODG, provide insight into HRQoL through participant-reported and caregiver-reported outcome measures and improve understanding of the relationships between RT dosimetry in specific brain regions and impairments of NCF.

### Author affiliations

<sup>1</sup>Leeds Institute of Medical Research, University of Leeds, Leeds, UK

<sup>2</sup>Leeds Cancer Centre, Leeds Teaching Hospitals NHS Trust, Leeds, UK

<sup>3</sup>Leeds Institute of Clinical Trials Research, University of Leeds, Leeds, UK

<sup>4</sup>Leeds Institute of Health Sciences, University of Leeds, Leeds, UK

<sup>5</sup>Velindre University NHS Trust, Cardiff, UK

<sup>6</sup>The Clatterbridge Cancer Centre NHS Foundation Trust, Liverpool, UK

<sup>7</sup>Brainstrust, Cowes, UK

<sup>8</sup>Christie NHS Foundation Trust, Manchester, UK

<sup>9</sup>University College London Hospitals NHS Foundation Trust, London, UK

<sup>10</sup>Department of Radiology, Leeds Teaching Hospitals NHS Trust, Leeds, UK

<sup>11</sup>Medical Psychology, Amsterdam UMC location Vrije Universiteit Amsterdam, Amsterdam, The Netherlands

<sup>12</sup>Mount Vernon Hospital, Northwood, UK

<sup>13</sup>Department of Endocrinology, Leeds Teaching Hospitals NHS Trust, Leeds, UK

<sup>14</sup>St George's, Lincolnshire Partnership NHS Foundation Trust, Lincoln, UK

<sup>15</sup>School of Health and Wellbeing, University of Glasgow, Glasgow, UK

<sup>16</sup>Medicines Management and Pharmacy Services, Leeds Teaching Hospitals NHS Trust, Leeds, UK

<sup>17</sup>Manchester Academic Health Science Centre, Manchester, UK

X Sarah Brown @DrSRBrown

**Contributors** Conception, trial design and ongoing conduct: EMH, FWB, JRP, SN, MB, SB, AB, HB, NGB, YCC, RC, SC, DE, NF, MK, JL, ML, EM, RDM, DJO'H, MN, CP, AS, CS, GAW, SC and LM. Development of the protocol, trial document and patient information sheet: EMH, FWB, JRP, SN, MB, SB, AB, HB, NGB, RC, SC, DE, MK, JL, ML, EM, RDM, DJO'H, MN, CP, AS, GAW, SC and LM. Writing manuscript: FS, EMH and LM. Reviewed manuscript: FS, EMH, FWB, JRP, SN, MB, SB, AB, HB, NGB, YCC, RC, SC, DE, NF, MK, JL, ML, EM, RDM, DJO'H, MN, CP, AS, CS, GAW, SC and LM. Guarantor: LM. All authors read and approved the final manuscript.

**Funding** This project (NIHR131082) is funded by the Efficacy and Mechanism Evaluation (EME) Programme, a Medical Research Council (MRC) and National Institute for Health and Care Research (NIHR) partnership. The views expressed in this publication are those of the author(s) and not necessarily those of the MRC, NIHR or the Department of Health and Social Care. The trial is co-ordinated by Leeds Cancer Research UK Clinical Trials Unit (CTUQQR-Dec22/100002) and sponsored by University of Leeds (GA18/118305). For enquires, contact APPROACH@leeds.ac.uk. The sponsor and funder had no contribution to the study design and concept; collection, management, analysis and interpretation of data; the writing of and decision to submit reports for publication. The sponsor and funder will review all manuscripts prior to publication. The National RTTQA Group is funded by NIHR.

**Competing interests** FS is supported by a Cancer Research UK Clinical Trial Fellowship (award number 125713). LM is an associate professor funded by Yorkshire Cancer Research (award number L389LM). FWB is an associate professor funded by Yorkshire Cancer Research (award number L389FB). All other authors have no competing interest to declare.

**Patient and public involvement** Patients and/or the public were involved in the design, or conduct, or reporting or dissemination plans of this research. Refer to the Patient and public involvement section for further details.

**Patient consent for publication** Not applicable.

**Provenance and peer review** Not commissioned; peer reviewed for ethical and funding approval prior to submission.

**Supplemental material** This content has been supplied by the author(s). It has not been vetted by BMJ Publishing Group Limited (BMJ) and may not have been peer-reviewed. Any opinions or recommendations discussed are solely those of the author(s) and are not endorsed by BMJ. BMJ disclaims all liability and responsibility arising from any reliance placed on the content. Where the content includes any translated material, BMJ does not warrant the accuracy and reliability of the translations (including but not limited to local regulations, clinical guidelines, terminology, drug names and drug dosages), and is not responsible for any error and/or omissions arising from translation and adaptation or otherwise.

**Open access** This is an open access article distributed in accordance with the Creative Commons Attribution 4.0 Unported (CC BY 4.0) license, which permits others to copy, redistribute, remix, transform and build upon this work for any purpose, provided the original work is properly cited, a link to the licence is given, and indication of whether changes were made. See: <https://creativecommons.org/licenses/by/4.0/>.

#### ORCID iDs

Eleanor Mae Hudson <http://orcid.org/0000-0001-8758-7163>

Sarah Brown <http://orcid.org/0000-0002-7975-7537>

#### REFERENCES

- 1 Cancer Research UK. Oligodendroglioma. 2019. Available: <https://www.cancerresearchuk.org/about-cancer/brain-tumours/types/oligodendroglioma>
- 2 Louis DN, Perry A, Wesseling P, *et al*. The 2021 WHO Classification of Tumors of the Central Nervous System: a summary. *Neuro Oncol* 2021;23:1231–51.
- 3 Buckner JC, Shaw EG, Pugh SL, *et al*. Radiation plus Procarbazine, CCNU, and Vincristine in Low-Grade Glioma. *N Engl J Med* 2016;374:1344–55.
- 4 Ostrom QT, Price M, Neff C, *et al*. CBTRUS Statistical Report: Primary Brain and Other Central Nervous System Tumors Diagnosed in the United States in 2015–2019. *Neuro Oncol* 2022;24:v1–95.
- 5 Brat DJ, Verhaak RGW, Aldape KD, *et al*. Comprehensive, Integrative Genomic Analysis of Diffuse Lower-Grade Gliomas. *N Engl J Med* 2015;372:2481–98.
- 6 van den Bent MJ, Carpentier AF, Brandes AA, *et al*. Adjuvant procarbazine, lomustine, and vincristine improves progression-free survival but not overall survival in newly diagnosed anaplastic oligodendrogliomas and oligoastrocytomas: a randomized European Organisation for Research and Treatment of Cancer phase III trial. *J Clin Oncol* 2006;24:2715–22.
- 7 Weller M, van den Bent M, Tonn JC, *et al*. European Association for Neuro-Oncology (EANO) guideline on the diagnosis and treatment of adult astrocytic and oligodendroglial gliomas. *Lancet Oncol* 2017;18:e315–29.
- 8 van den Bent MJ, Brandes AA, Taphoorn MJB, *et al*. Adjuvant procarbazine, lomustine, and vincristine chemotherapy in newly diagnosed anaplastic oligodendroglioma: long-term follow-up of EORTC brain tumor group study 26951. *J Clin Oncol* 2013;31:344–50.
- 9 Douw L, Klein M, Fagel SS, *et al*. Cognitive and radiological effects of radiotherapy in patients with low-grade glioma: long-term follow-up. *Lancet Neurol* 2009;8:810–8.
- 10 Klein M, Heimans J, Aaronson N, *et al*. Effect of radiotherapy and other treatment-related factors on mid-term to long-term cognitive sequelae in low-grade gliomas: a comparative study. *The Lancet* 2002;360:1361–8.
- 11 Lawrie TA, Gillespie D, Dowswell T, *et al*. Long-term neurocognitive and other side effects of radiotherapy, with or without chemotherapy, for glioma. *Cochrane Database Syst Rev* 2019;8:CD013047.
- 12 Boele FW, Meads D, Jansen F, *et al*. Healthcare utilization and productivity loss in glioma patients and family caregivers: the impact of treatable psychological symptoms. *J Neurooncol* 2020;147:485–94.
- 13 Boele FW, Douw L, Reijneveld JC, *et al*. Health-related quality of life in stable, long-term survivors of low-grade glioma. *J Clin Oncol* 2015;33:1023–9.
- 14 Harrabi SB, Bougatf N, Mohr A, *et al*. Dosimetric advantages of proton therapy over conventional radiotherapy with photons in young patients and adults with low-grade glioma. *Strahlenther Onkol* 2016;192:759–69.
- 15 Sherman JC, Colvin MK, Mancuso SM, *et al*. Neurocognitive effects of proton radiation therapy in adults with low-grade glioma. *J Neurooncol* 2016;126:157–64.
- 16 Shih HA, Sherman JC, Nachtigall LB, *et al*. Proton therapy for low-grade gliomas: Results from a prospective trial. *Cancer* 2015;121:1712–9.
- 17 Tabrizi S, Yeap BY, Sherman JC, *et al*. Long-term outcomes and late adverse effects of a prospective study on proton radiotherapy for patients with low-grade glioma. *Radiother Oncol* 2019;137:95–101.
- 18 Ofuya M, McParland L, Murray L, *et al*. Systematic review of methodology used in clinical studies evaluating the benefits of proton beam therapy. *Clin Transl Radiat Oncol* 2019;19:17–26.
- 19 Brada M, Stenning S, Gabe R, *et al*. Temozolomide versus procarbazine, lomustine, and vincristine in recurrent high-grade glioma. *J Clin Oncol* 2010;28:4601–8.
- 20 van den Bent MJ, Wefel JS, Schiff D, *et al*. Response assessment in neuro-oncology (a report of the RANO group): assessment of outcome in trials of diffuse low-grade gliomas. *Lancet Oncol* 2011;12:583–93.
- 21 Wefel JS, Vardy J, Ahles T, *et al*. International Cognition and Cancer Task Force recommendations to harmonise studies of cognitive function in patients with cancer. *Lancet Oncol* 2011;12:703–8.
- 22 Cohen J. *Statistical Power Analysis for the Behavioral Sciences*. 2nd edn. New York: Routledge, 1988.

- 23 Haldbo-Classen L, Amidi A, Lukacova S, *et al.* Cognitive impairment following radiation to hippocampus and other brain structures in adults with primary brain tumours. *Radiother Oncol* 2020;148:1–7.
- 24 Herbert E, Julious SA, Goodacre S. Progression criteria in trials with an internal pilot: an audit of publicly funded randomised controlled trials. *Trials* 2019;20:493.
- 25 US Department of Health and Human Services Food and Drug Administration. *Multiple Endpoints in Clinical Trials Guidance for Industry*. 2017.
- 26 US Department of Health and Human Services Food and Drug Administration. *Adaptive Design Clinical Trials for Drugs and Biologics Guidance for Industry*. 2019.
- 27 National Cancer Institute. Common toxicity criteria for adverse events (version 5.0). 2017. Available: [https://ctep.cancer.gov/protocoldevelopment/electronic\\_applications/ctc.htm#ctc\\_60](https://ctep.cancer.gov/protocoldevelopment/electronic_applications/ctc.htm#ctc_60)
- 28 Peiffer AM, Leyrer CM, Greene-Schloesser DM, *et al.* Neuroanatomical target theory as a predictive model for radiation-induced cognitive decline. *Neurology (Ecricon)* 2013;80:747–53.
- 29 Duffau H. Why brain radiation therapy should take account of the individual structural and functional connectivity: Toward an irradiation 'à la carte'. *Crit Rev Oncol Hematol* 2020;154:103073.
- 30 Eekers DBP, Di Perri D, Roelofs E, *et al.* Update of the EPTN atlas for CT- and MR-based contouring in Neuro-Oncology. *Radiother Oncol* 2021;160:259–65.
- 31 Gondi V, *et al.* Hippocampal Contouring: A Contouring Atlas for RTOG 0933. 2014. Available: <https://rtog.org>
- 32 Sobotta J, *et al.* *Sobotta Atlas of Human Anatomy: Edited by R. Putz and R. Pabst with Assistance of Renate Putz*. 13th edn. Philadelphia: Lippincott Williams & Wilkins, 2001.
- 33 Sun Y, Yu X-L, Luo W, *et al.* Recommendation for a contouring method and atlas of organs at risk in nasopharyngeal carcinoma patients receiving intensity-modulated radiotherapy. *Radiother Oncol* 2014;110:390–7.
- 34 Gondi V, Hermann BP, Mehta MP, *et al.* Hippocampal dosimetry predicts neurocognitive function impairment after fractionated stereotactic radiotherapy for benign or low-grade adult brain tumors. *Int J Radiat Oncol Biol Phys* 2013;85:348–54.
- 35 Bates E, Wilson SM, Saygin AP, *et al.* Voxel-based lesion-symptom mapping. *Nat Neurosci* 2003;6:448–50.
- 36 Habets EJJ, Hendriks EJ, Taphoorn MJB, *et al.* Association between tumor location and neurocognitive functioning using tumor localization maps. *J Neurooncol* 2019;144:573–82.
- 37 Powell JR, Murray L, Burnet NG, *et al.* Patient Involvement in the Design of a Randomised Trial of Proton Beam Radiotherapy Versus Standard Radiotherapy for Good Prognosis Glioma. *Clin Oncol* 2020;32:89–92.
- 38 Kirkby KJ, Kirkby NF, Burnet NG, *et al.* Heavy charged particle beam therapy and related new radiotherapy technologies: The clinical potential, physics and technical developments required to deliver benefit for patients with cancer. *Br J Radiol* 2020;93:20200247.
- 39 Price J, Hall E, West C, *et al.* TORPEdO – A Phase III Trial of Intensity-modulated Proton Beam Therapy Versus Intensity-modulated Radiotherapy for Multi-toxicity Reduction in Oropharyngeal Cancer. *Clin Oncol* 2020;32:84–8.
- 40 Amos R, Bulbeck H, Burnet NG, *et al.* Proton Beam Therapy – the Challenges of Delivering High-quality Evidence of Clinical Benefit. *Clin Oncol* 2018;30:280–4.
- 41 Rieu R, Crellin A, Thomson D, *et al.* Developing a National Infrastructure for Proton Beam Therapy Trials. *Clin Oncol* 2023;35:279–82.
- 42 Cayuela N, Jaramillo-Jiménez E, Càmara E, *et al.* Cognitive and brain structural changes in long-term oligodendroglial tumor survivors. *Neuro Oncol* 2019;21:1470–9.
- 43 Hwang E, Burnet NG, Crellin AM, *et al.* A Novel Model and Infrastructure for Clinical Outcomes Data Collection and Their Systematic Evaluation for UK Patients Receiving Proton Beam Therapy. *Clin Oncol* 2022;34:11–8.
- 44 Gualtieri CT, Johnson LG. Reliability and validity of a computerized neurocognitive test battery, CNS Vital Signs. *Arch Clin Neuropsychol* 2006;21:623–43.